

FLOWRIDER®





THE ULTIMATE SURFING MACHINE

FLOWRIDER®

BRING SOME SURFING SOUL TO YOUR VENUE 4

Hotels & Resorts
Retail & Hospitality
Water Parks
Municipal

PRODUCT LINEUP 8

FlowRider® Double
FlowRider® Wave in a Box Double
FlowRider® Triple
FlowCurl™
WaveOz™
FlowBarrel™
LatiTube™

WHY DO THE BEST BRANDS CHOOSE FLOWRIDER? 18

SERVICE YOU CAN COUNT ON

ACCESS THE LATEST INNOVATIONS

LEAN ON OUR EXPERTISE 19

THE SAFEST SHEET WAVE IN THE INDUSTRY 21

Patented Technology

READY TO MAKE WAVES WITH FLOWRIDER? 22

Surfing is undeniably fun and it's also undeniably cool. The sport has given birth to a surfing lifestyle that has become a global trend. Today, with the leaps in technology, you can bring the surf culture right to your doorstep, miles away from the ocean. Create a hip, on-trend venue that will keep visitors coming back for more.

The FlowRider® brand is synonymous with surf simulators and beloved by guests around the world. Hundreds of venues around the world choose FlowRider because of the leading safety, service and performance we offer. You'll find this versatile sheet wave attraction at water parks, shopping malls, beach bars, municipalities, hotels, and even on cruise ships. Here's how adding a FlowRider to your venue can help increase revenue, traffic, and your bottom line.

BRING SOME SURFING SOUL TO YOUR VENUE



FLOWRIDER DELIVERS

FOOD & BEVERAGE SALES

FlowRiders function as anchor attractions around which shops, restaurants, and bars can be placed. This encourages people to hang out and watch riders for hours at a time.



THE TEEN DEMOGRAPHIC

Teens are very opinionated, therefore difficult to attract and retain. If you can accommodate the teen, you can capture the entire family.



MARKET DIFFERENTIATION

Differentiate your venue from competitors' with a cool surf machine and give guests an extra reason to visit



GUEST LOYALTY

As a sport that takes years of consistent practice to master, flowboarding poses an opportunity for operators to capitalize on repeat customers.



REVENUE GENERATION

Aside from increased revenue from food and beverage, retail and events, the FlowRider is a proven revenue generator in and of itself through ride ticket sales.



SPORTS & LEISURE LIFESTYLE

Like skateboarding, surfing and snowboarding, flowboarding has a strong community of riders. They live for the thrill and cool lifestyle that surrounds the FlowRider.



If you offer a FlowRider as an amenity, guests will be more inclined to book with you over other properties and they will want to stay on property once they are there! Even hotels and resorts that are located far from the coast can still provide a “beachy” experience to guests by setting up concessions and cabanas near the FlowRider for the ultimate coastal feel.



HOTELS & RESORTS

Malls, restaurants, and beach bars are among the multitude of operators that have reaped benefits from adding a FlowRider to their establishments. The attraction leads to longer stays, higher foot traffic, increased spending on food and beverage, and encourages teen participation. The FlowRider also naturally invokes the image of a cool, healthy, California lifestyle, which helps boost the image of any venue.



RETAIL & HOSPITALITY

Add a surf attraction to your park with a FlowRider, which can be strategically placed in a high foot traffic area. Bars, restaurants, and shops perfectly complement the FlowRider, driving increased revenue through the sale of food and beverage, souvenirs, and also encourages spectators to stay and linger. Generate income from the sale of FlowRider tickets or rent it out for events and competitions which are incredibly popular with teenagers.



WATER PARKS

Including a FlowRider at your municipal outdoor park or indoor aquatic center helps transform a community pool into a hip and trendy gathering site. This encourages visitors to come and learn how to swim, a life-saving skill, and also surf. Implement attractions and activities around the FlowRider to generate revenue and help offset the costs of maintaining your pool.



MUNICIPAL

FlowRider has the broadest portfolio in the industry and is constantly innovating to make it the safest and most reliable, because these are the factors that you'll depend on every day. From the classic FlowRider Double to the edgy FlowCurl, you'll be itching to jump on a flowboard as you read this:

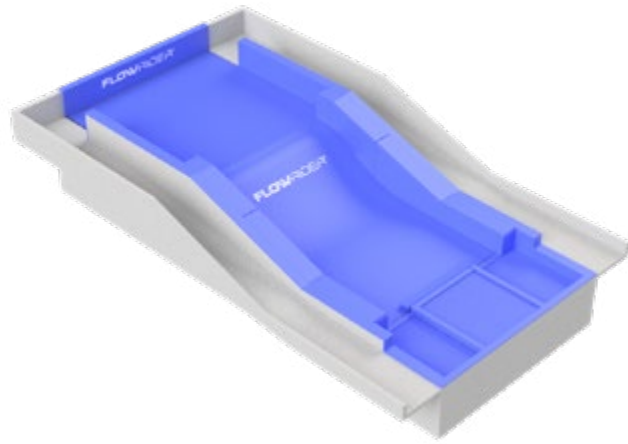
PRODUCT LINEUP



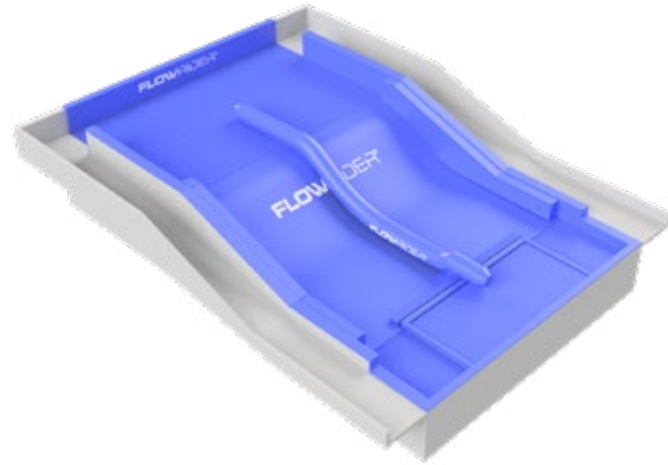
FLOWRIDER®

Our most popular product to date, the FlowRider Double is highly sought after. Its connection to board sports engages the teen market, their friends, and families. Its size allows two riders at once with a divider in place and has a capacity of between 240 and 480 rides per hour.

SINGLE

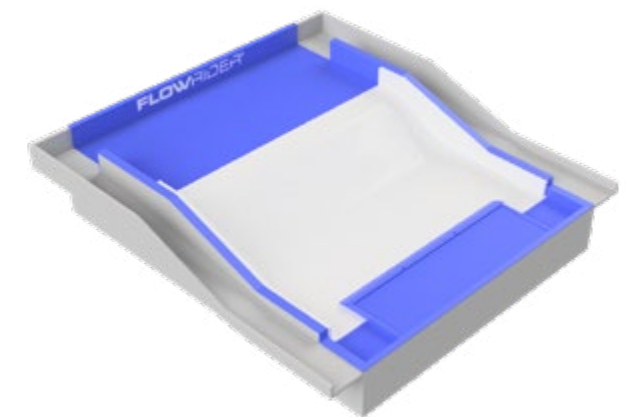


DOUBLE



TRIPLE

The FlowRider Triple gives riders an impressive 40-foot wide ride area—10 feet wider than the FlowRider Double. It can be divided into three lanes, allowing three riders to enjoy the ride at the same time, offering a maximum capacity of 720 rides per hour.

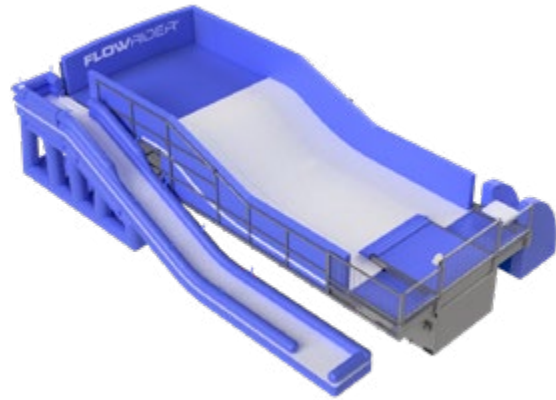


	Footprint	Capacity	Weight	Loading (excluding concrete)	Tank Volume	Tank Depth	Power Requirements
FlowRider Single	108m ² (1,166 ft ²)	120-240 Rides/Hour	115,500 kg (254,600 lbs)	1,088 kgs/m ² 224 lbs/sq ft	106,000 L (28,000 Gal)	1.1 m (3.6 ft)	180 Amps (90 kw/hr)
FlowRider Double	158m ² (1,696 ft ²)	240-480 Rides/Hour	172,300 kg (379,900 lbs)	1,060 kgs/ m ² 218 lbs/sq ft	160,000 L (42,000 Gal)	1.1 m (3.6 ft)	360 Amps (180kW/hr)
FlowRider Triple	195.2 m ² (2,226 ft ²)	360-720 Rides/Hour	232,700 kg (513,000 lbs)	1,119 kgs/m ² 230 lbs/sq ft	212,500 L (56,000 Gal)	1.1 m (3.6 ft)	570 AMPS (270 kW/hr)

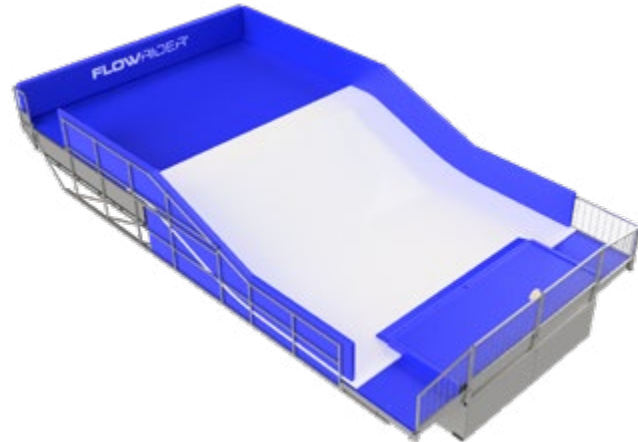


The FlowRider Wave in a Box Double delivers the Southern California lifestyle to any venue while simultaneously adding an element of versatility to any installation site. Unlike the FlowRider Double, this product is a self-contained unit that provides a turnkey solution for venues across all markets.

SINGLE



DOUBLE

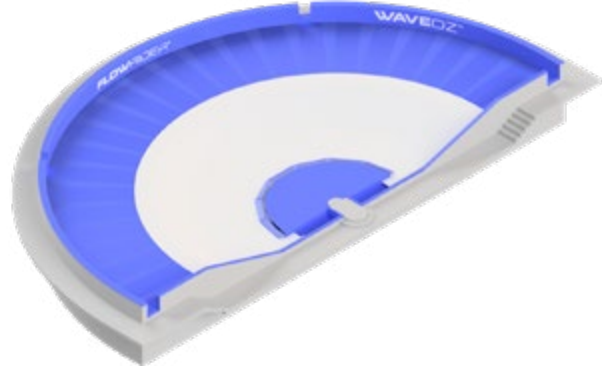


	Footprint	Capacity	Weight	Loading (excluding concrete)	Tank Volume	Tank Depth	Power Requirements
FlowRider WIAB Single	63.7 m ² (680 ft ²)	120-240 Rides/Hour	43,090 kg (95,000 lbs)	676 kgs/ m ² 140 lbs/sq ft	32,175 L (8,500 Gal)	1.1 m (3.6 ft)	180 Amps (90 kw/hr)
FlowRider WIAB Double	175 m ² (1,895 ft ²)	240-480 Rides/Hour	98,000 kg (216,100 lbs)	702 kgs/ m ² 144 lbs/sq ft	60,570 L (16,000 Gal)	1.1 m (3.6 ft)	360 Amps (180kW/hr)

WAVEOZ™

The WaveOz features a huge and entirely inflatable ride surface. It is the biggest product that we have, giving riders 57 meters (187 feet), 180° of space wall to wall along the top of the ride surface to show off their skills and push the limits of bodyboarding and flowboarding.

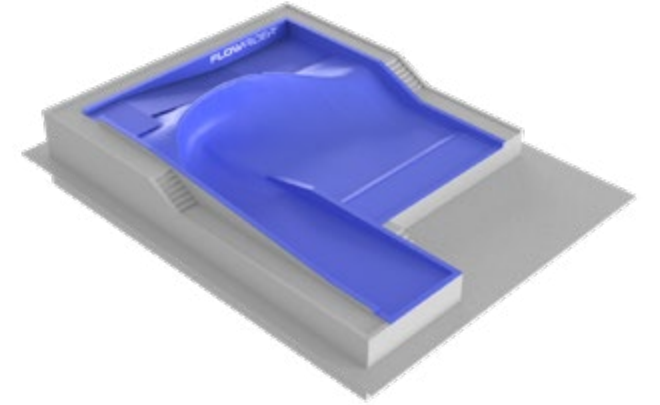
The sheer linear space on this attraction allows for more speed, more back to back tricks, and an overall enjoyable ride experience. The ride surface can also be divided into multiple sections, offering the industry's highest capacity of up to 960 rides per hour.



	Footprint	Capacity	Weight	Loading (excluding concrete)	Tank Volume	Tank Depth	Power Requirements
WaveOz 180	647 m ² (2,226 ft ²)	720 Rides/Hour	800,000 kg (1,760,000 lbs)	1221 kgs/m ² 249 lbs/sq ft	760,000 L (200,000 Gal)	1.7 m (5.7 ft)	1365 Amps (630 kW/hr)

FLOWBARREL®

The FlowBarrel is a magnet for fun and adventurous people. While it takes skill and practice to learn how to properly ride this wave, it takes minimal effort to be a spectator. The FlowBarrel is a very entertaining centerpiece that spectators can't resist, but is best for experienced riders.



FLOWCURL®

The FlowCurl fills the gap between the popular FlowRider series and the more extreme FlowBarrel product line – it's in essence, a FlowBarrel with an inflatable surface. There is a steep wave face for airs and a breakable section that allows for more radical maneuvers. It also incorporates a straight flow section which allows the operator to divide the attraction, thus creating a safe space for people to learn before advancing to the curling section.

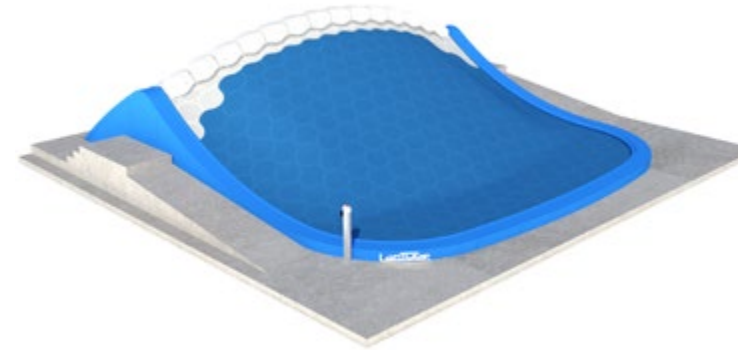
	Footprint	Capacity	Weight	Loading (excluding concrete)	Tank Volume	Tank Depth	Power Requirements
FlowCurl™	355.12 m ² (3852 ft ²)	240-480 Rides/Hour	344,000 kg (758,400 lbs)	968 kgs/m ² 196 lbs/sq ft	315,000 L (83,000 Gal)	1.1 m (3.6 ft)	1020 AMPS (510 kW/hr)

	Footprint	Capacity	Weight	Loading (excluding concrete)	Tank Volume	Tank Depth	Power Requirements
FlowBarrel Ten	345 m ² (3,724 ft ²)	120-240 Rides/Hour	507,000 kg (1,100,000)	1,470 kgs/m ² 295 lbs/sq ft	454,000 L (120,000 Gal)		1240 Amps (640 kW/hr)



LatiTube
FLOW-RIDER™

The LatiTube is a surfing attraction that the whole family can master, with great “getting tubed” photo opportunities built in. This technology includes a radically new way for operators to precisely control water flow so that every guest can be appropriately challenged while experiencing the thrill of surfing. On the LatiTube, guests will be able to stand on their first try because the operator can make the wave easier to ride, making this a great water park product.



	Footprint	Capacity	Weight	Loading (excluding concrete)	Tank Volume	Tank Depth	Power Requirements
LatiTube Double	158 m ² (1,701 ft ²)	120-240 Rides/Hour	142,000 kg (312,000 lbs)	1,471 kgs/m ² 300 lbs/sq ft	128,000 L (33,700 Gal)	1.8 m (5.9 ft)	380 Amps (290 kW/hr)

WHY DO THE BEST BRANDS CHOOSE FLOWRIDER®?



We have the world's most popular sheet waves. From our start in 1991, our presence has grown tremendously, with installations in countries from China and Indonesia to Canada and Australia. We are persistently focused on innovation and safety and have managed to create not just the best surf simulators in the world, we've also inspired a cultural movement in the industry.

SERVICE YOU CAN COUNT ON

We pride ourselves on the incredible service that we provide to our clients. No matter how long it has been since we installed your FlowRider, you can always count on us for advice, help, and solutions. We have dedicated teams in San Diego, Barcelona, Shanghai, Dubai, and Vancouver who are ready to assist you in any time zone. We stand by the quality of our products and strive to always provide support with minimal lag time.

ACCESS TO THE LATEST INNOVATIONS

FlowRider has always been the market leader in innovation and creating ever-safer rides thanks to our continuous improvement process. In recent years, we have improved our nozzle flaps, surfaces, padding, and pump tube intakes—no complacency here!



LEAN ON OUR EXPERTISE

We are not simply equipment suppliers, but consultants, too. Our goal is to create a smooth, yet exciting purchasing experience for all clients. If you have questions, we'll be here to answer them and to guide you through all your decision-making processes. We'll help you understand the build process, what permits you may need, kick start your marketing, and how to create a brand for your venue that will keep guests coming back.



Andrew Thatcher refining his FlowRider skills

“Our passion is to collaborate with clients in order to help them make their FlowRider dreams a reality. Whether it is a discussion on design, operations or programming, our 20+ years of experience working with this product almost always comes in to play. Our entire team is dedicated to maximizing your venue's success.”

—ANDREW THATCHER
VICE PRESIDENT OF SALES





THE SAFEST SHEET WAVE IN THE INDUSTRY

FlowRider's entire philosophy is based on safety. We run quality control checks on suppliers, and we conduct simulations and rigorous testing – such as G-Force testing on our various patented ride surfaces – before anything goes to market. We want to not just provide fun wave products, but the safest ones, too.

PATENTED TECHNOLOGY

- **Nozzle Flaps:** Situated at the front of the ride, these are a revolutionary and integral element. They are operated by a patented system that immediately closes when the ride turns off. If the ride is shut down while someone is riding, the rider simply glides up over the top, leaving no chance for them to come into contact with the nozzle head.
- **Multiple-Guest Ride Divider:** Our inflatable ride divider is a soft air-cushioned “fence” that allows you to safely employ two or more riders at a time on the FlowRider Double, FlowRider Triple, and WaveOz™ 180. If a guest runs into the floating divider while riding, it simply absorbs the motion and gently moves out of the way, allowing riders to ease back into the main riding area. This new technology is easy to install, extremely safe, and is preferred by riders globally.
- **Max Recovery System:** Years ago, we moved away from hollow-tube vinyl mat and a hard fiber glass base to a proprietary design that allows for soft, durable landings. Hollow tube matting is not as soft and is difficult to fix or replace – time- and financial-wise. If a Max Recovery System bar fails, it can be easily replaced with minimal downtime. FlowRider is the only ride of its kind to employ this technology.
- **Patented Ride Surface:** While we hold many patents, the most advanced ones are for our ride surface. The technology behind them make rides safer, yet ups the thrill level. Our tensioned and inflatable ride surface technologies ensure that guests even enjoy their falls!



We love helping clients create successful venues. Drop us a line and share your plans, we'd be delighted to help, just like we have for hundreds of other companies. This is what the FlowRider team lives for!

FLOWRIDER®

FlowRider, Inc. Headquarters

3655 Pacific Highway, #A
San Diego, CA 92101
+1 619 241 2517

www.flowrider.com

A high-angle, blue-tinted photograph of a man surfing on a wave. The man is shirtless, wearing dark shorts, and is captured in a dynamic pose with his arms outstretched. The water is turbulent and white with foam. The overall mood is energetic and adventurous.

**READY TO MAKE
WAVES WITH
FLOWRIDER?**

“At FlowRider, we provide fun, and the only way to do that is to be at our client’s side every step of the way. We have defined service in our industry, and will continue to do so beyond, to bring the never ending wave to you and your patrons!”

—MARSHALL MYRMAN

FLOWRIDER®
by WhiteWater

FLOWRIDER, INC. HEADQUARTERS

3655 Pacific Highway, #A
San Diego, CA 92101
+1 619 241 2517

www.flowrider.com

FlowRider, Inc. is part of the
WhiteWater family

www.whitewaterwest.com

 **WHITEWATER®**
EST. 1980

EUROPE, MIDDLE EAST, RUSSIA & AFRICA

Gran Via de les Corts Catalanes 680,
7º, 1a, 08010 Barcelona
Spain
+34 932 504 431

SHANGHAI OFFICE

Jing'an Kerry Center, Tower 1,
Room 2804, No. 1515
West Nanjing Road, Jing'an District
Shanghai, P.R., 200040
China
+86 21 32567586

UAE OFFICE (DUBAI)

Office 1305, Arenco Tower
Dubai Media City,
Dubai
+971 (0) 4 422 9318